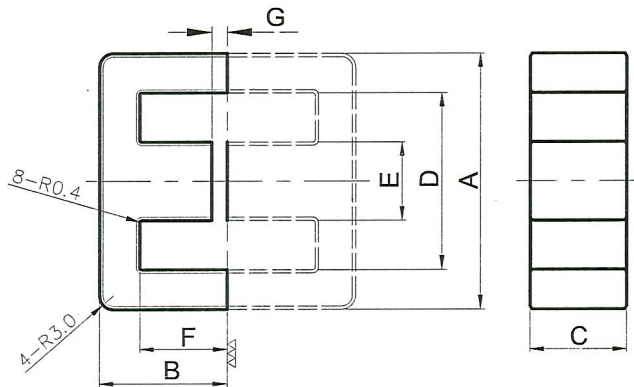


SPECIFICATION

PL-7 EE5555A AL2600

E55/28/21

Dimensions [mm]



A	55.15 ± 1.05
B	27.50 ± 0.30
C	21.00 +0.00/-0.80
D	38.10 ± 0.60
E	16.95 ± 0.25
F	18.80 ± 0.30
G	0.11 x 1 REF.

Core set parameters

Core constant	C1	0.350	mm ⁻¹
Effective magnetic path length	le	123	mm
Effective cross-sectional area	Ae	352	mm ²
Effective volume	Ve	43470	mm ³
Center leg area	Ac	349	mm ²
Winding area	Aw	397	mm ²

Electrical characteristics

Inductance	L	mH	26.00 ± 12%	COIL : 2UEW 0.35φ, 100Ts HP-4284A or equivalent. - 1kHz, 0.1V, 23±3°C
AL - value	AL	nH/N ²	2600 ± 12%	
Power loss	P/L	W/set	3.75 MAX.	SY-8216 B-H Analyzer or eq. - 100kHz, 100mT, 100°C



SAMWHA ELECTRONICS CO., LTD.